



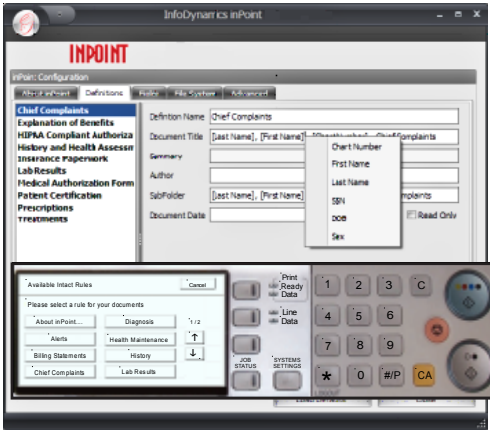
**The Fastest Way  
to Scan and  
Get Your  
Information Back!**

We've all been there, standing in front of the copier, fiddling with the menus, trying to figure out how to file your scanned documents while others impatiently look over your shoulder...

Imagine scanning documents at your MFP and having them automatically named, filed and indexed without giving up valuable time in your day. inPOINT™ is a remarkably affordable utility that turns your copier corner into a stream lined document center.

## inPOINT™ Features

- Select and scan documents directly from your Sharp OSA™-enabled MFP.
- Define up to six custom fields and 10 document types per PC.
- Customizable index and filing rules.
- Download industry packs of document types from our website.
- Link to ODBC databases to reduce redundant data entry.
- Search and view documents with powerful inPOINT™ features or simply browse in a Windows File Directory.
- PDF™ and XML® output provides an easy and instant upgrade path for Intact Document Solution Software or other document management systems.



**Customizable and easy-to-navigate screens help make data entry as easy as 1-2-3.**

Want to know the best thing about **inPOINT™ by InfoDynamics**? When combined with a Sharp® MFP, you get incredible efficiency and an incredible value.

Visit our website at [www.infod.com/inPOINT™](http://www.infod.com/inPOINT™) to learn more about how inPOINT™ and Sharp OSA™ technology can make you an instant document pro.



## System Requirements

### inPoint Workstation Specifications

- Pentium 4 or greater
- 512 MB of RAM or greater (1 GB recommended)
- Network interface card
- 40 GB Hard Drive or greater recommended

### Operating System

- Windows XP Professional
- Windows 2000
- Windows Server 2000
- Windows Server 2003

### Sharp OSA™ Compatible MFPs

- AR-M355N, M455N, M550N, M620N and M700N (Required: MX-NSX1 Network Scanning Expansion Kit)
- MX-M3500N, 3501N, 4501N, 5500N, 6200N and 7000N (Required: MX-NSX1 Network Scanning Expansion Kit)
- MX-M350N, M450N, M550N, M620N, and M700N

### Sharp OSA™ Application Communication Module

- MX - AMX2